

CLASS II BACKFILL ABOVE WALL (IF REQUIRED) 1.5:1 MAX SLOPE

WALLS TERMINATE INTO HILLSIDE WINGED OR AT 90° ANGLE.

Design Height	FF SY/LF	No. 2 Ton/LF	Class II Ton/LF	Row									
				1	2	3	4	5	6	7	8		
4.5	1.2	1.0	0.7	60"	41"	28"							
6	1.4	1.4	0.8	60"	41"	28"							
7.5	1.5	1.8	0.9	60"	41"	41"	28"						
9	1.7	2.3	0.9	60"	41"	41"	41"	28"					
10.5	1.9	2.6	1.0	60"	60"	41"	41"	41"	28"				
12	2.1	3.2	1.1	60"	60"	41"	41"	41"	41"	28"			

5 #5 BARS SPACED EVENLY RUNNING LENGTH OF FOOTER

CHAIN-LINK FENCE (NOT SHOWN)

#4 REBAR SET 18" CENTERS ALONG FOOTER

FOOTER REINFORCEMENT DETAIL NTS

NO. 2 STONE BACKFILL SET IN 2' LIFTS

28" TOP BLOCK

41" BLOCK

UP TO 9' TALL = 41" BLOCK
OVER 9' TALL = 60" BLOCK

60" BLOCK

6" X 6" CONCRETE KEY

#4 REBAR SET 18" CENTERS ALONG FOOTER

1.25" SETBACK (TYP.)

MOVE BLOCKS FORWARD DURING INSTALLATION TO ENGAGE SHEAR KNOBS

MEDIUM WEIGHT NON-WOVEN FILTER FABRIC IF SOIL CONTACT

REINFORCED CONCRETE LEVELING PAD SET BELOW LOCAL FROST LINE, CLASS "AA" CONCRETE W/ FIBER REINFORCEMENT (7' X 2' X LENGTH WALL)

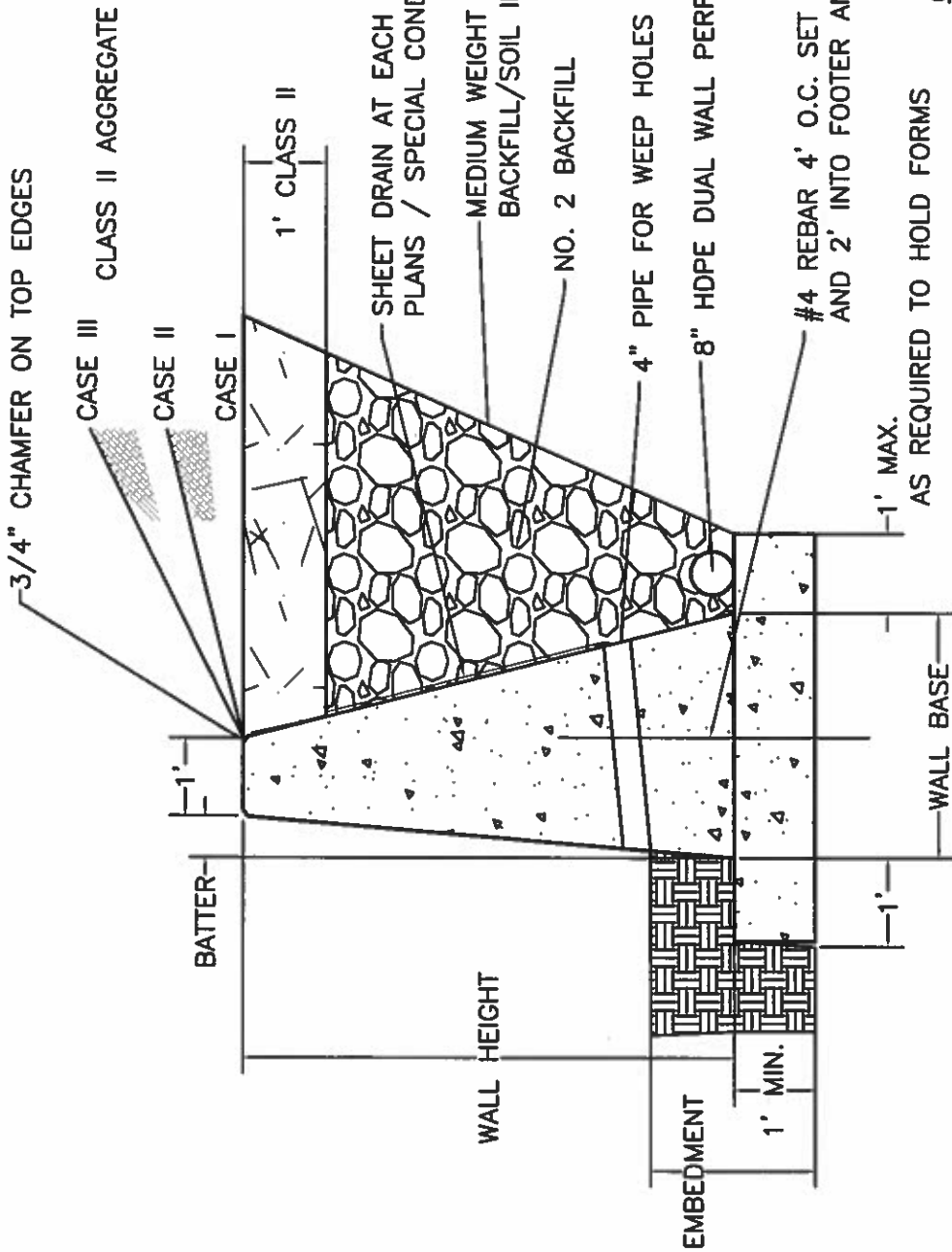
8" HDPE DUAL WALL WRAPPED IN LIGHT WEIGHT FILTER FABRIC OR SOCK PIPE

GRAVEL SUB BASE (IF REQUIRED BY ENGINEER, BIAXIAL GEO-GRID NOT SHOWN)

5 #5 BARS SPACED EVENLY RUNNING LENGTH OF FOOTER

USE WITH AML 30-20-3

NON-REINFORCED BLOCK WALL- TYPE II (AML 30-20-2)



BATTER

CASE I AND CASE II

- H = 3'-0" TO LESS THAN 5'-0" (VERTICAL)
- H = 5'-0" TO LESS THAN 10'-0" (12:1)
- H = 10'-0" TO LESS THAN 12'-0" (6:1)

CASE III

- H = 3'-0" TO LESS THAN 5'-0" (12:1)
- H = 5'-0" TO LESS THAN 12'-0" (6:1)

AS REQUIRED TO HOLD FORMS

EMBEDMENT

1. MINIMUM EMBEDMENT VALUE FOR FIRM EARTH IS 2'-0".
2. CASE III REQUIRES AN EMBEDMENT OF 1/4 H FOR A WALL OVER 8'.
3. FOR FOOTER SET ON ROCK 1/2 FOOTER DEPTH WILL BE SET IN ROCK.

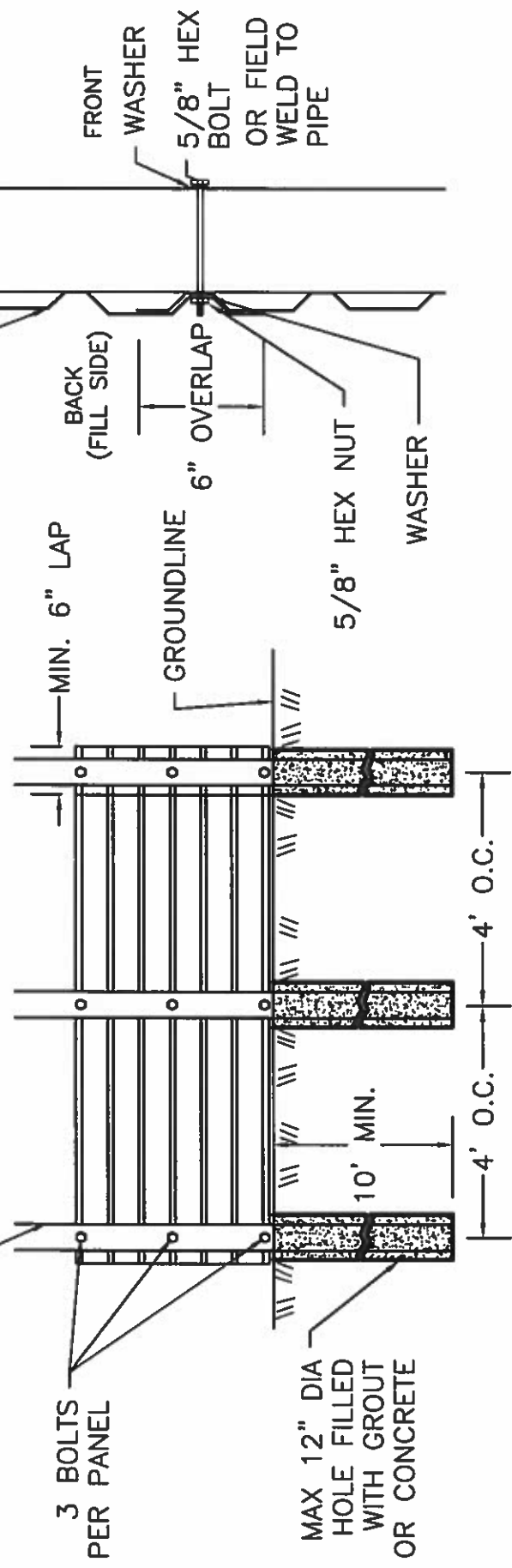
WALLS TERMINATE INTO HILLSIDE WINGED OR AT 90° ANGLE

USE WITH AML 30-50-2

CONCRETE GRAVITY WALL (AML 30-50-1)

STEEL PILES SET IN CONCRETE OR 6" SCHEDULE 80 STEEL PIPE SLOTTED BELOW GRADE TO PERMIT GROUT INFILTRATION

CORRUGATED 11 GAUGE GALVANIZED STEEL PANELS



FINISHED STEEL PANEL SIZE - 3.75' X 10'

DEBRIS BARRIER WALL- PERMANENT (AML 50-20-2)

PILES SET 4' ON CENTER WITH GUARDRAIL PANELS

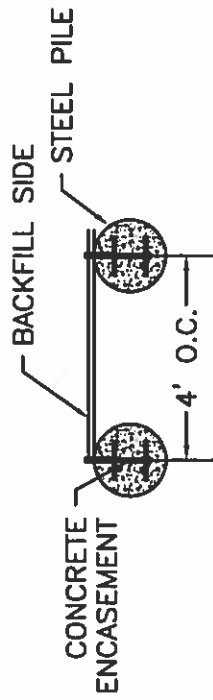
10'
(MAX)

EXISTING GROUND

CLASS II AND/OR NO. 2 STONE

8' MAX

EXISTING GROUNDLINE



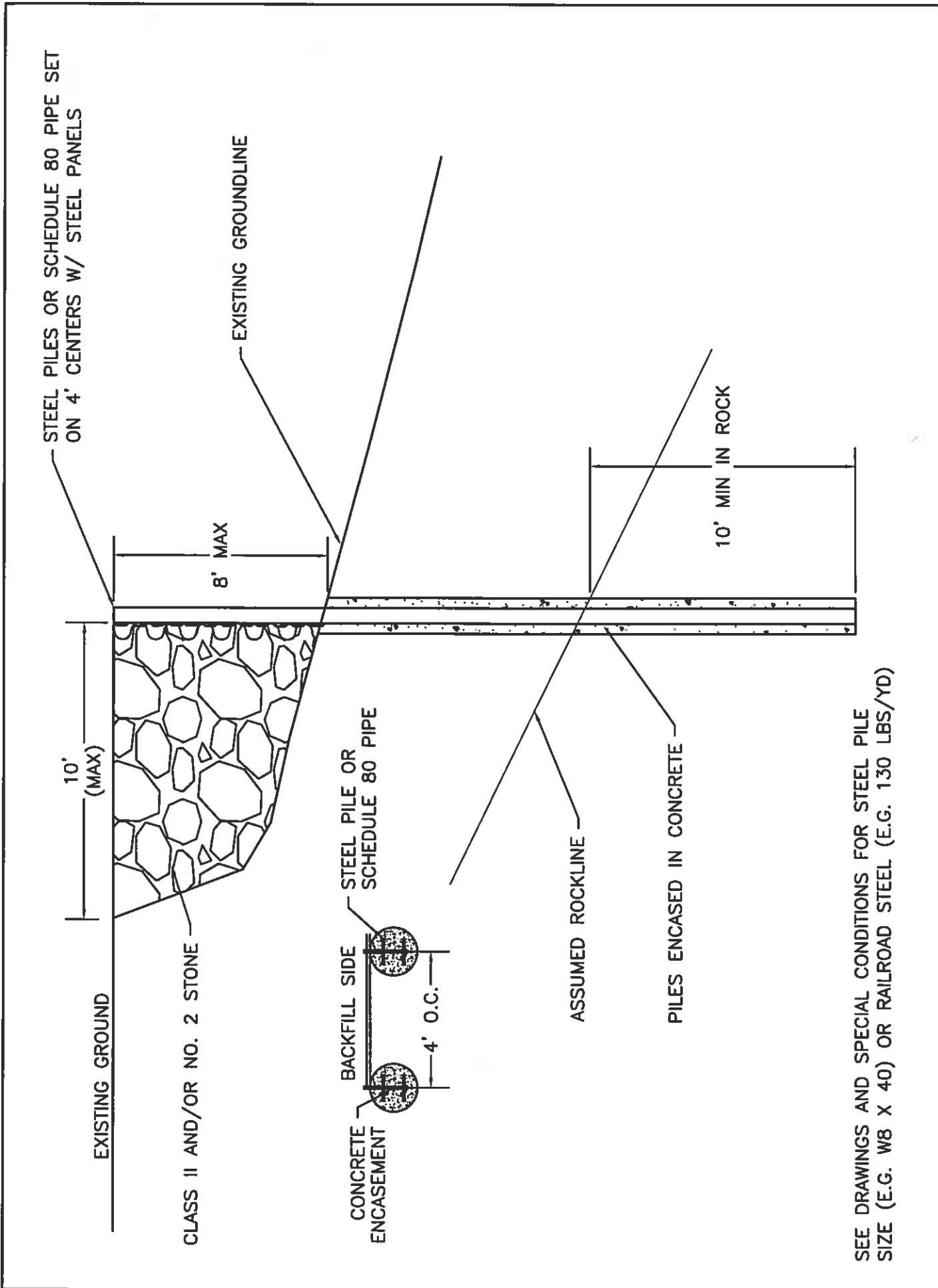
ASSUMED ROCKLINE

PILES ENCASED IN CONCRETE

10' MIN IN ROCK

SEE DRAWINGS AND SPECIAL CONDITIONS
FOR STEEL PILE SIZE (E.G. W8 X 40) OR
RAILROAD STEEL (E.G. 130 LBS/YD)

GUARDRAIL PANEL WALL- STEEL PILES (AML 50-20-3)



SEE DRAWINGS AND SPECIAL CONDITIONS FOR STEEL PILE SIZE (E.G. W8 X 40) OR RAILROAD STEEL (E.G. 130 LBS/YD)

STEEL PANEL WALL (AML 50-20-4)